

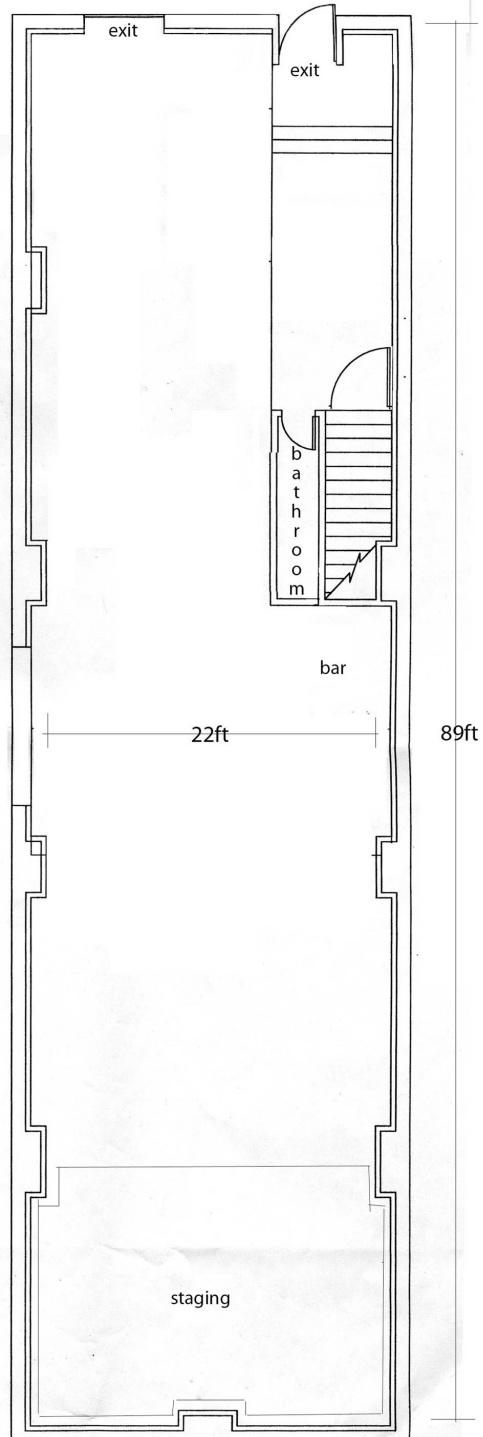
GENERAL INFORMATION

Mailing Address: House Of Yes
342 Maujer Street
Brooklyn, NY 11206

FLOOR PLAN

ground floor schematic plan
first floor

342 Maujer St.
Brooklyn, NY
11206



LIGHTING SYSTEM

Control

A Fat Frog Zero88 Lighting Board is located in the control booth. The Fat Frog can control up to 48 generic channels, which may be manually or automatically patched to 512 DMX channels. It is capable of storing 999 cues. It also has 108 (12 faders x 9 pages) manual submasters.

For manual / further specs see <http://support.zero88.com/main/en/product/9>.

Dimmers

20 x 5 Amp Lighting Circuits (in use for house plot)

Lighting Units

8 x Parcans
6 x Fresnels
4 x Source-four Lekos
4 x Times Square Q6 Series Telescopic
3 x Colortrans
1 x ADJ Quad-Phase Club Light
1 x LED Par

Follow Spots

1 x DMX Chauvet Spotlight

Laser Units

1 x DMX Chauvet Scorpion Storm RGX Laser

Video Units

1x Optoma DV11 DLP MovieTime Digital DVD Projector (1600 ANSI lumens)

Ladders

Two stepping ladders

SOUND SYSTEM

Microphones

- 4 x SM 58 Vocal Microphones
- 2 x SM 57 Microphones
- 6 x PG 58 Vocal Microphones
- 3 x Behringer C-2 Condenser Instrument Microphones
- 1 x 5-Piece Shure Drum Mic Set

Amps

- 1 x Fender Reverb Pro
- 1 x Fender Frontman
- 1 x Peavey KB 100 Keyboard/Bass Amp

Instruments

- 1 x Standup Piano (decently tuned) keys are worn out with ivory stripped, a couple of missing strings
- 1 x Partial Pearl Drum Kit (Does not include snare, cymbals, clutches, kick pedal)

DJ Equipment

- 2 x Technic 1210MK-2 Turntables (Only 1 turntable is active/DJ's need to bring their own needles)
- 1 x Numark C3USB Mixer- 3 phono (RCA), 8 line (RCA), 3 mic (1/4")
- 1 x D. I Boxes (Passive and Active Input)

Main Sound System

- 1 x Mackie Onyx 1640 Firewire Mixer
- 1 x Lexicon MX 200 Reverb and Digital Effects Processor (vocal effects)
- 1 x 16 XLR Live Wire Snake (stage side connected to sound mixer)
- 2 x Cerwin Vega EL-36C Earthquake Subwoofers 1000 Watts each
- 2 x Yorkville Pulse PL 315 Mains 300 Watts
- 1 x Crown XTi 2000 Power Amp
- 1 x Behringer EP4000 Power Amp
- 1 x Behringer Ultradrive Pro Speaker Management System
- 2 x DBX 266XL Compressors
- 1 x DBX 231s Graphic Equalizer